

duo
In the Hamptons

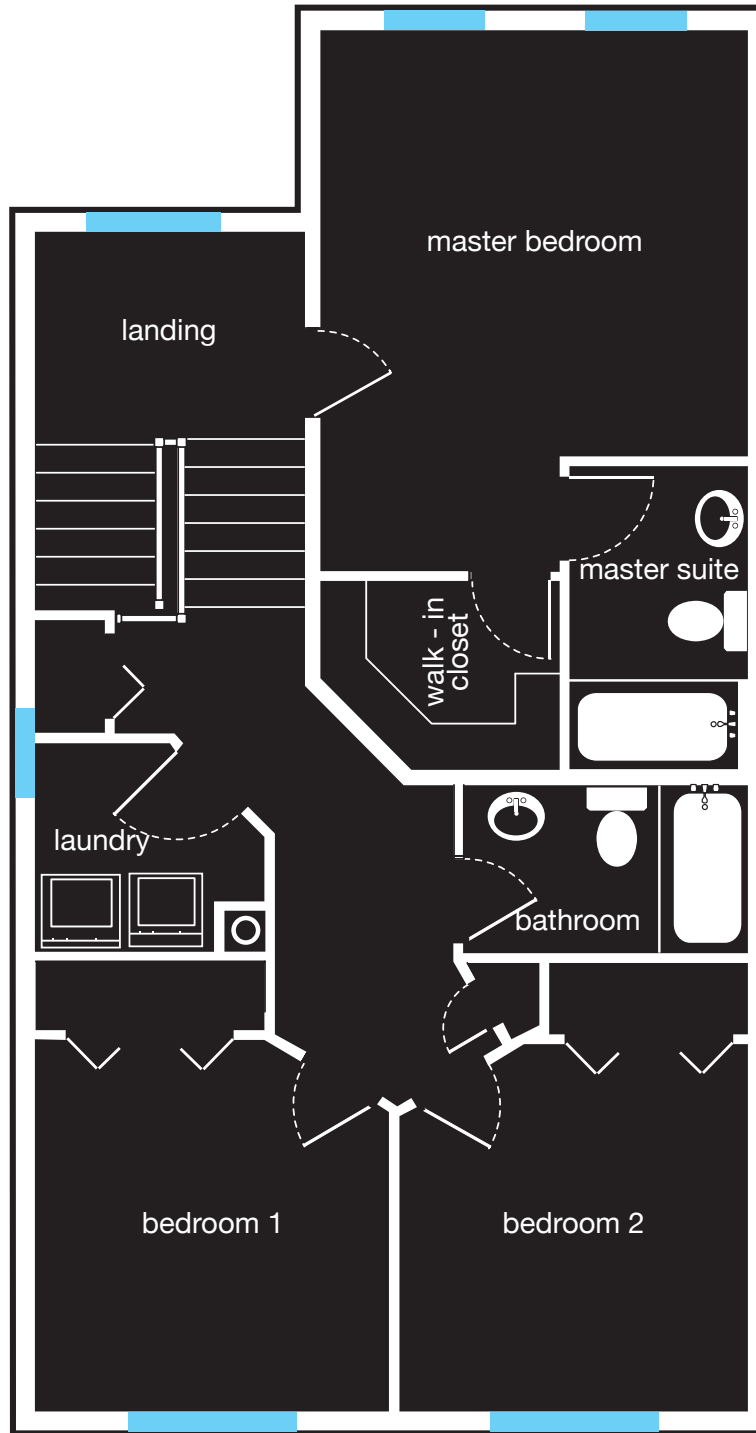
The developer reserves the right to make modifications and changes. All sizes and dimensions are approximate.

main floor **2 story**

3 bedroom
2.5 bathroom
1463 sq. ft.

Kingsland
DEVELOPMENTS, INC.

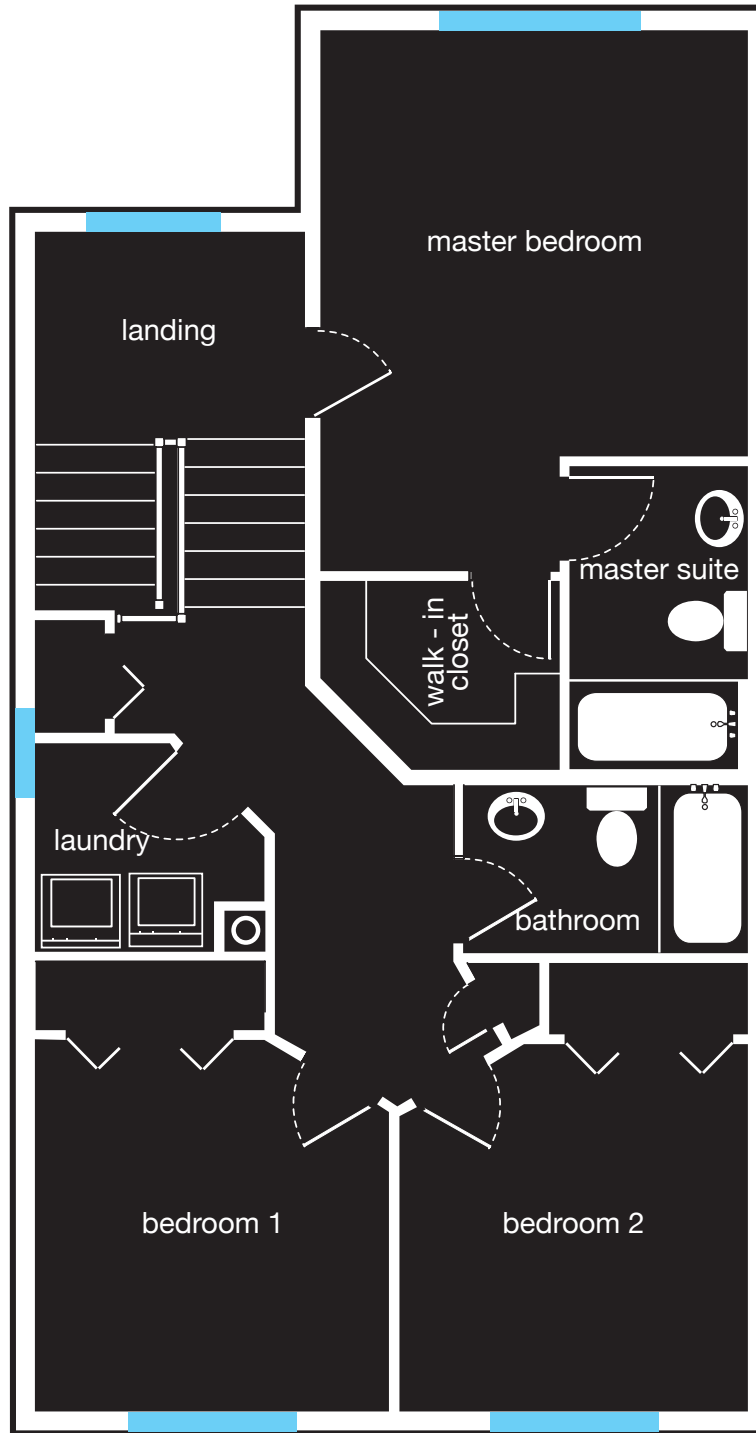
M MEDICAN
Building Communities Since 1974



The developer reserves the right to make modifications and changes. All sizes and dimensions are approximate.

duo
In the Hamptons

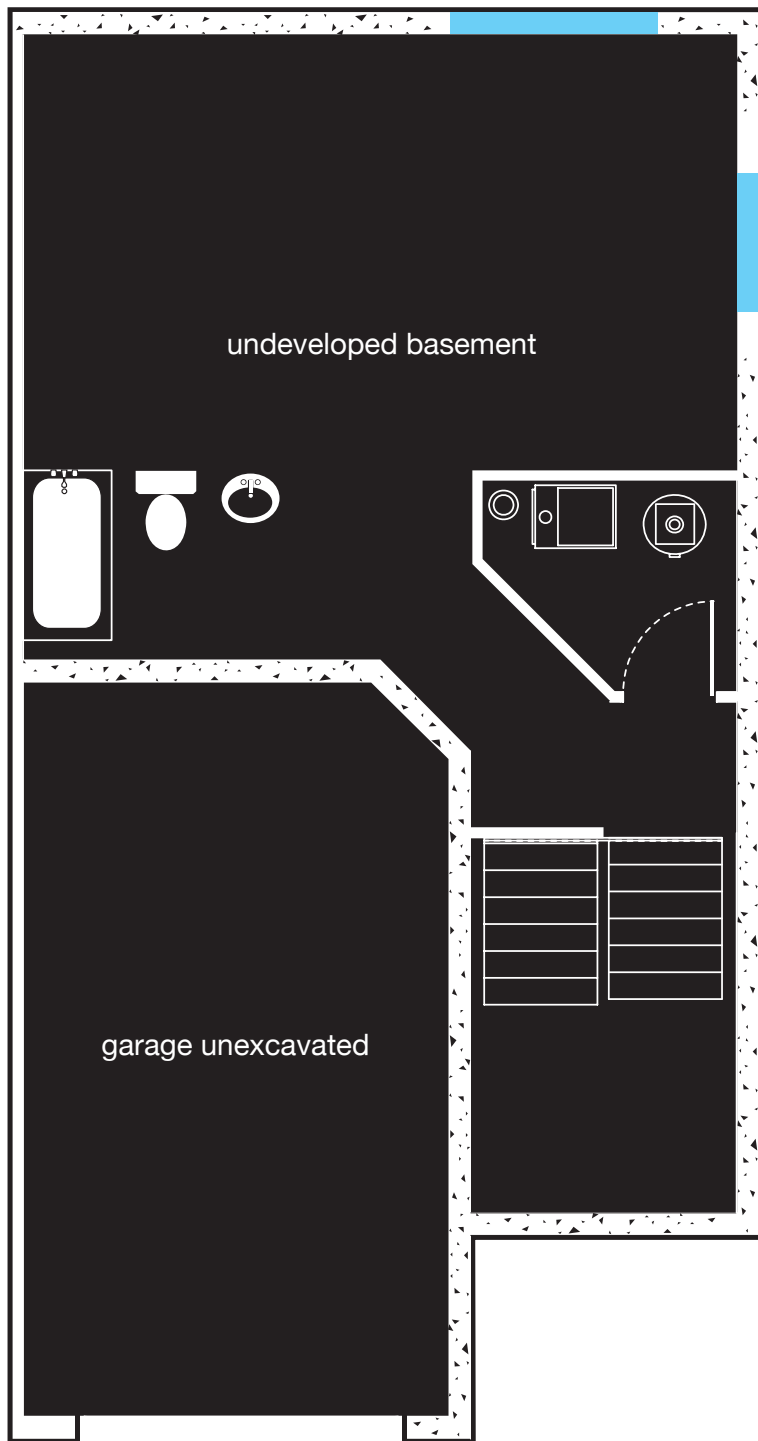
second floor 2 story



The developer reserves the right to make modifications and changes. All sizes and dimensions are approximate.

duo
In the Hamptons

second floor 2 story



duo
In the Hamptons

The developer reserves the right to make modifications and changes. All sizes and dimensions are approximate.

basement 2 story